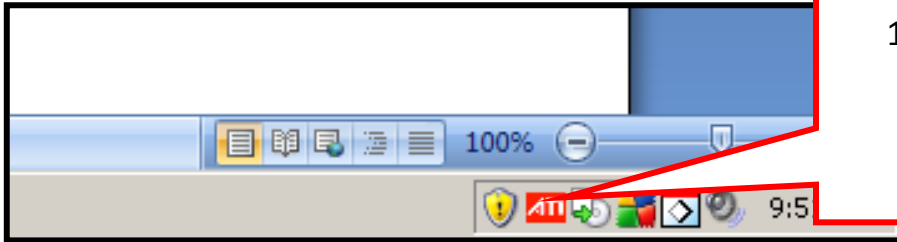
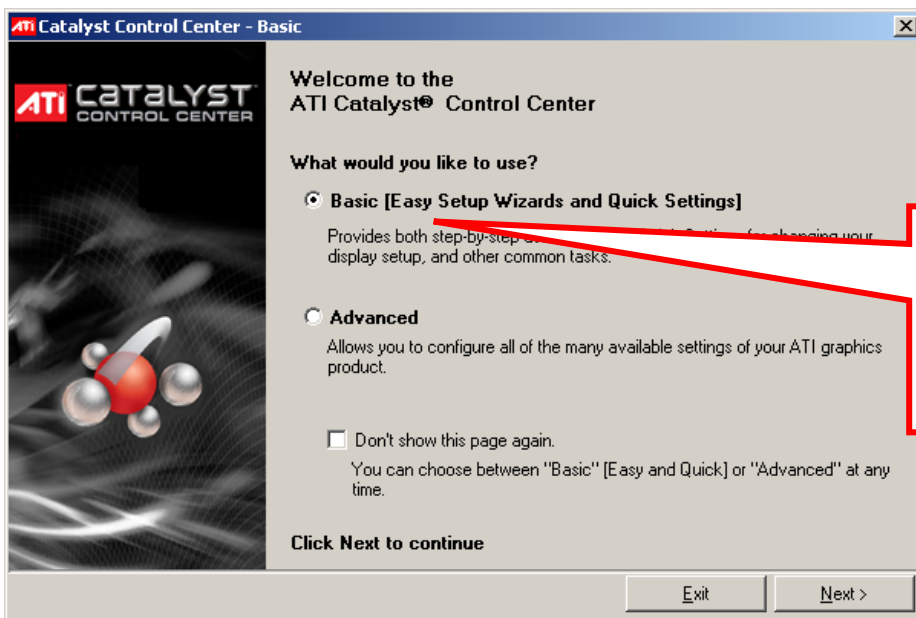


S-Video Set up Directions

Important: Plug your S-Video cable into the back of your computer and the back of the television and restart your machine before proceeding so the software will recognize that they are connected before you begin. You no longer need the dongle adapter.



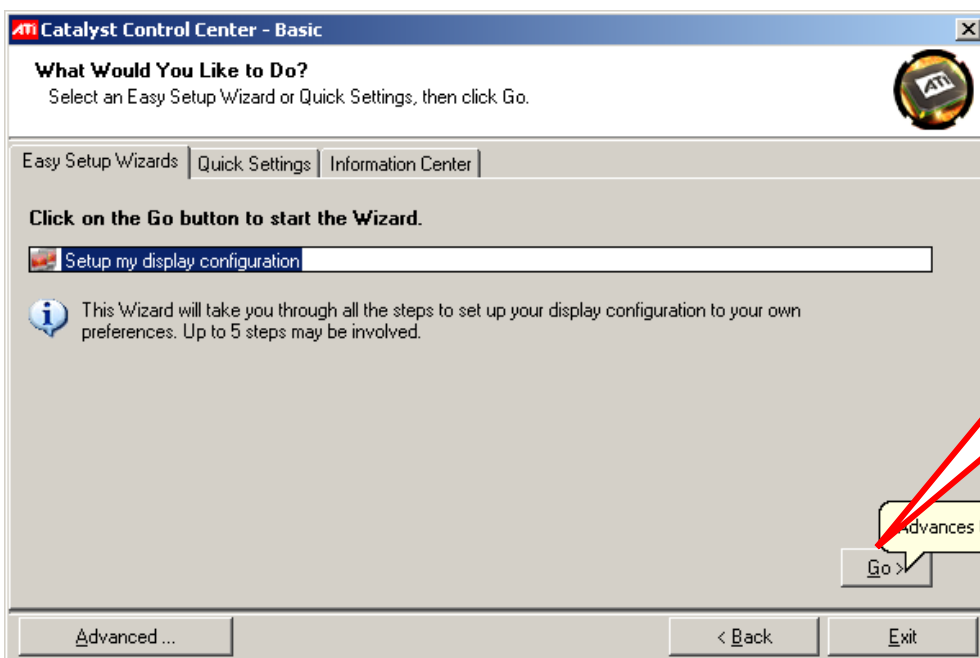
1. Click on the **ATI icon** in the bottom right taskbar of your screen.



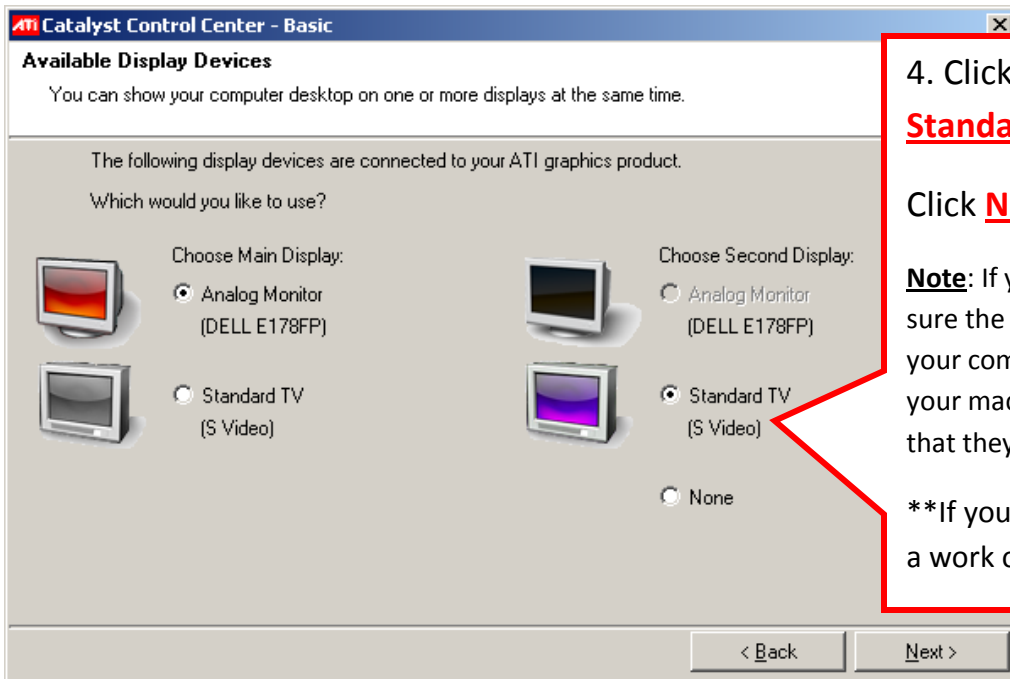
This window will come up.

2. **Basic** should be selected.

Click **Next**.



3. Click **Go**

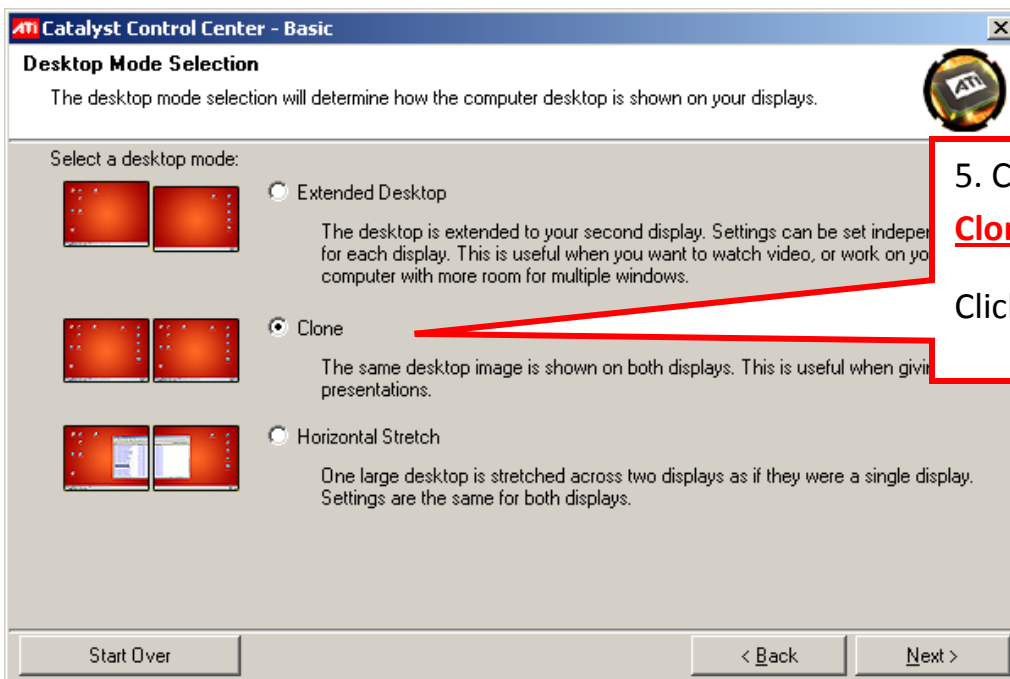


4. Click in the circle next to **Standard TV. (S-Video)**

Click **Next**.

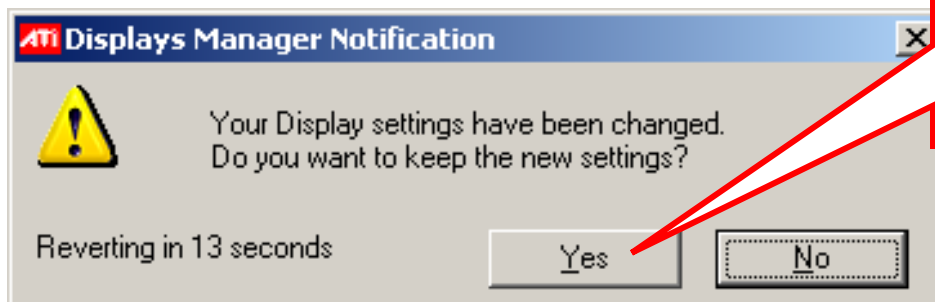
Note: If you don't see this screen, then make sure the S-video is plugged into the back of your computer and TV and that you restarted your machine because it doesn't recognize that they are connected yet.

****If you still don't this window then enter a work order.**

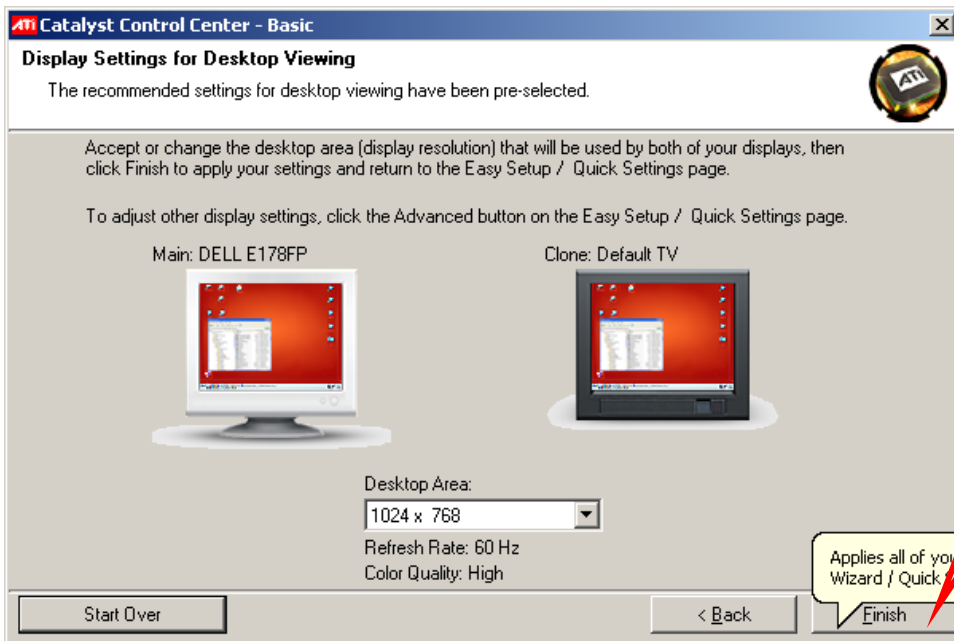


5. Click in the circle next to **Clone**.

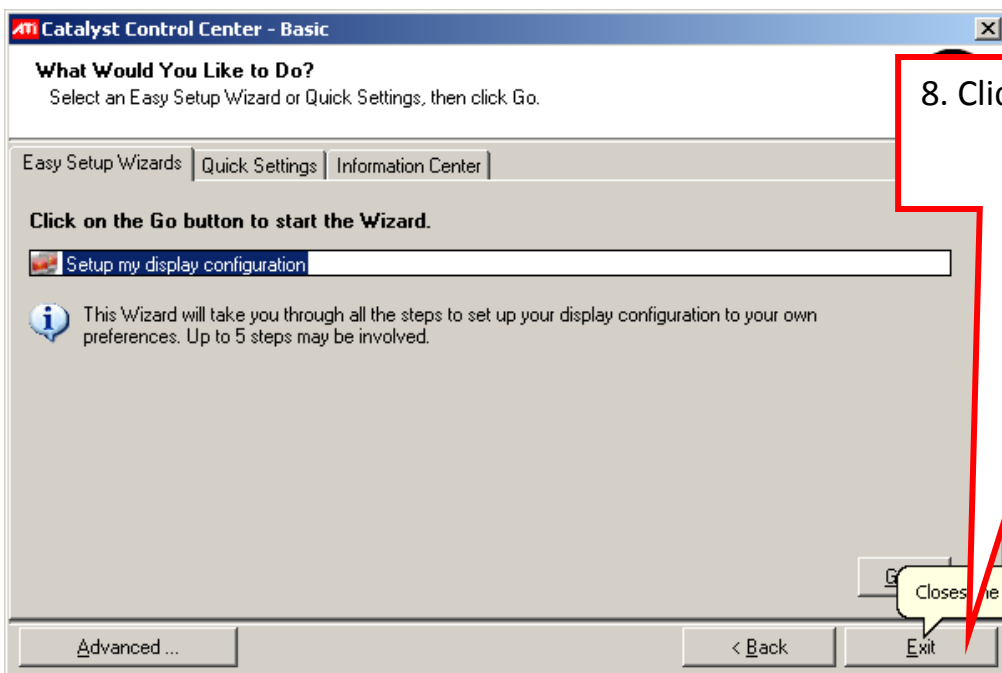
Click **Next**.



6. Click **Yes** before it reverts back to old settings.



7. Click **Finish**



8. Click **Exit**.

Note: If your S-Video is still not working and the S-video is plugged into your TV and the back of your computer and you have restarted your machine, go ahead and enter a work order.